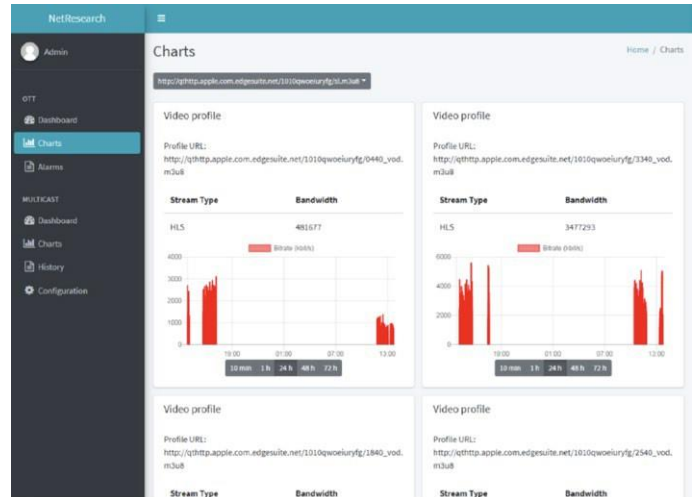


Streaming Quality Probe

The Net vProbe is a scalable software solution for monitoring transport quality of the OTT (DASH and HLS) multicast video streams. The probe can be installed on the x86 servers or virtual machines at the strategic test points on the clouds or locally. Actual allowed number of OTT and /or multicast streams is limited only by the selected physical or virtual equipment.

OTT Monitoring Features

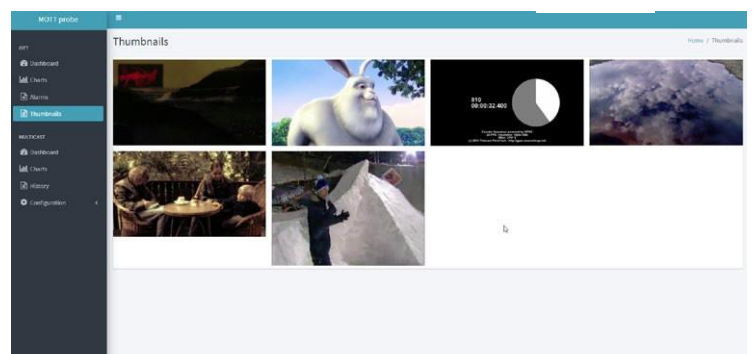
- ▶ HLS and DASH compatible
- ▶ Measures streams throughput
- ▶ Verifies HLS manifest correctness
- ▶ Verifies DASH sidx files correctness
- ▶ Monitors all Profiles simultaneously, Throughput over time histograms allow independent analysis of each profile
- ▶ Allows around the clock round robin monitoring for large numbers of streams
- ▶ Verifies and reports http (200 OK, 206 Partial Content)
- ▶ Detects http errors
- ▶ Dynamic generation of HTTP requests, the probe behaves as OTT client/player
- ▶ Video decoding and thumbnails presentation
- ▶ Buffer fill percentage
- ▶ Error reporting via SNMP
- ▶ Stream Transport Quality Factor STXqf - unique OTT server quality indicator



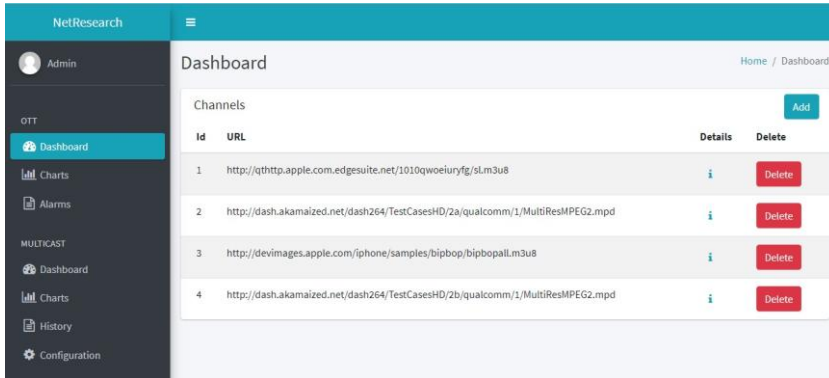
**Live decoding
and thumbnail
display of monitored
streams**

MULTICAST MPEG-TS

- ▶ ETSI TR 101 290 P1, P2 i P1 metrics
- ▶ PSI tree details
- ▶ Compatible with MPTS i SPTS
- ▶ Error reporting via SNMP

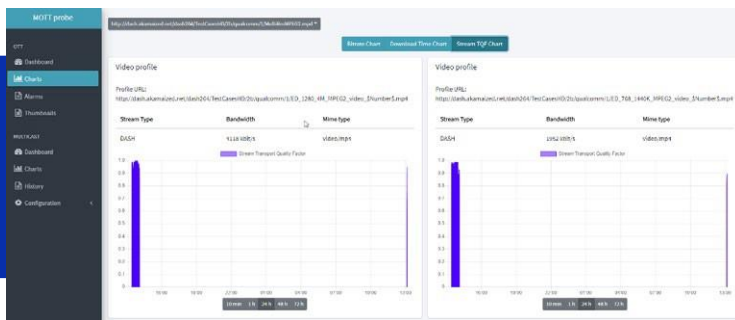
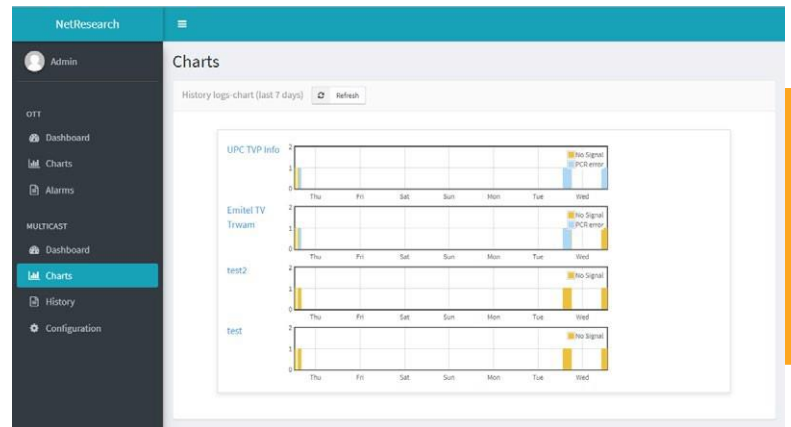


Net-vProbe



Preloaded list of channels to be monitored

Multicast streams error log



STXqf - Stream Transport quality histogram

Multicast stream Errors histogram and PSI tree

