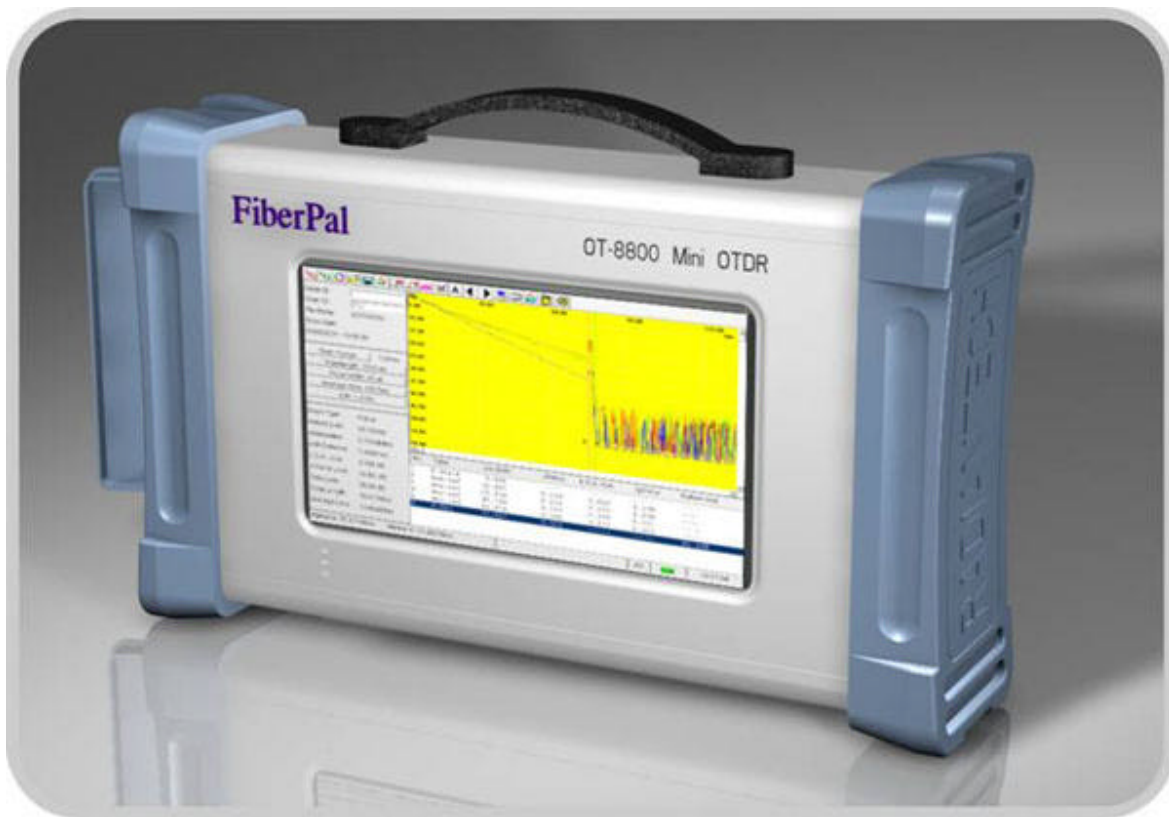




## OT-8800 Mini OTDR

OT-8800 is a new compact, miniature, cost-effective, portable Optical Time-domain Reflectometer (OTDR). By providing all the measurement functions and performance required for optical fiber construction and maintenance, OT-8800 offers an easy way for operating fiber fault detection in FTTX, CATV and optical LAN applications.



## OT-8800 Mini OTDR

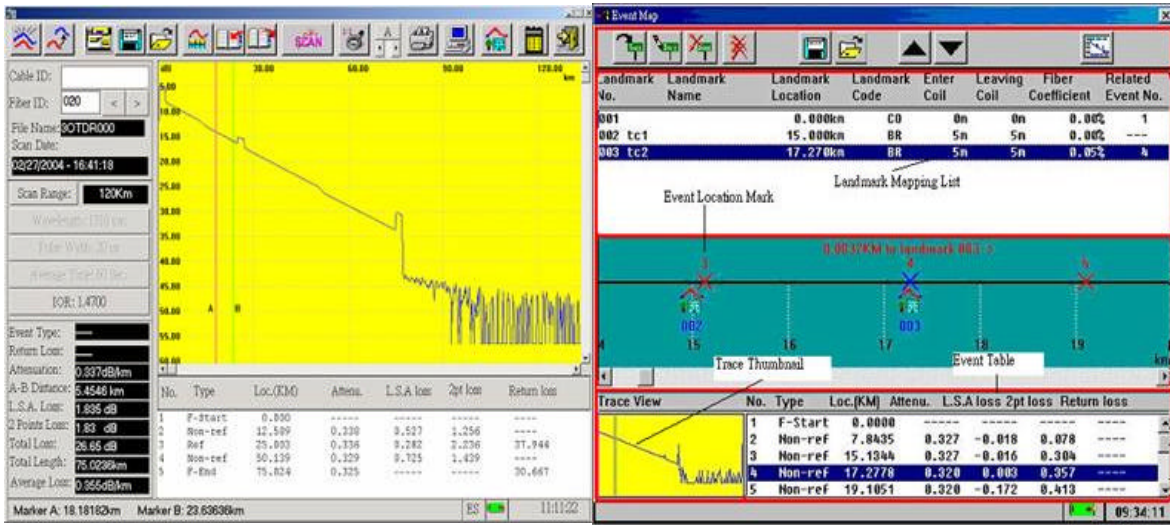
### *Applications*

- Splicing loss detection
- Fiber attenuation measurement
- Acceptance Test
- Break Point Location
- Fiber Length measurement
- On-line Monitoring
- Fiber identification

### *Features*

- Fault event analysis software
- Real-time display
- Touch LCD, high resolution screen
- Rugged, portable and easy to use
- LAN and USB 1.1 ports
- Powered by rechargeable Li-Ion battery
- Visual fault locator (option)

Note: All specifications are subject to change without notice



Processor	NEW
Memory	NEW
Storage	NEW
Display	7" TFT VGA
Pointing Device	Touch screen
Printer	N/A
Dimensions (LxWxH)	220 x 170 x 80 mm
Weight	2.5 kg
Continue working hours	3 hours
Power Supply	Lithium Ion Battery (10.8 VDC) & AC charge adaptor (100~240 V. 50~60 Hz)

## Specifications: OT-8800

Model		OT-8810	OT-8820
Wavelength (nm)		1310 / 1550 ± 20 nm	1550 / 1625 ± 20 nm
Fiber		9/125µm single mode fiber	
Optical Connector		FC/PC	
Pulse width (ns)		10, 30, 100, 300, 1000, 3000, 10000, 20000 ns, Auto	
Dynamic Range (dB)	Effective	35 / 33	33 / 31
	SNR=1	38 / 36	36 / 34
Event Dead Zone		3 m	
Attenuation Dead Zone		10 m	
Sampling Resolution (m)		0.25, 0.5, 1, 2 m	
Max. Sample Points		128 k	
Distance Accuracy		±( 2 m + 3 x10 <sup>-5</sup> distance + marker resolution) (Fiber index error not included)	
Loss Accuracy		± 0.05 dB or 0.1 dB (whichever greater)	
Return Loss Accuracy		± 4 dB	
Max. Display Range		240 km (150 mile)	



[www.netrsr.com](http://www.netrsr.com)